

Experiments comparing the performance of PET bottle filters by material

Kaito Matsutomo ▪ Riku Imazu ▪ Fua Itou ▪ Tesshou Inada ▪

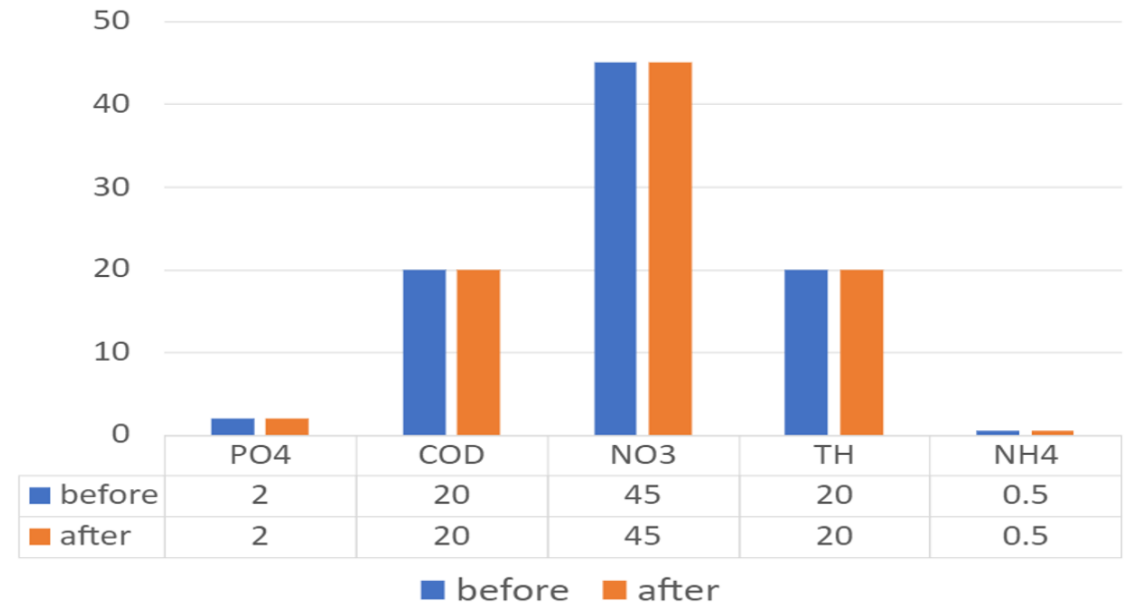
Hibiki Kanou ▪ Hikaru Shiraishi ▪ Senato Mori

Matsuyama Minami High School

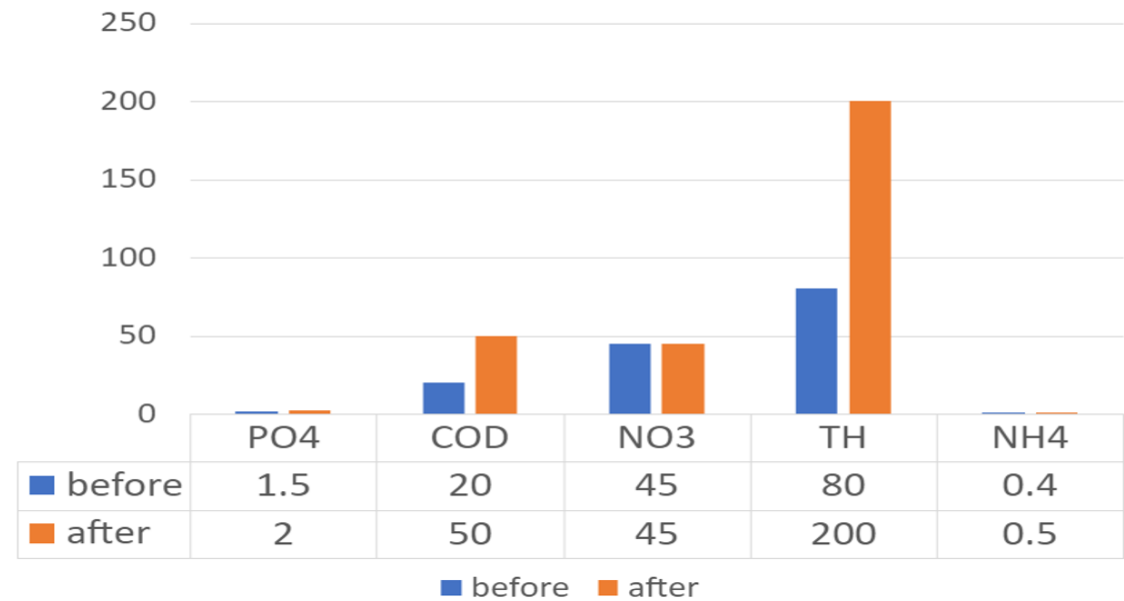
Last time



Zeolite+Cotton

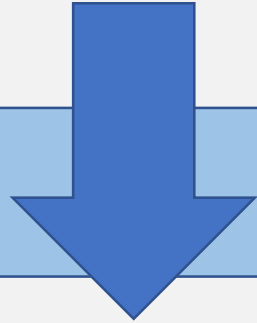


Pumice+Tissue



Motive

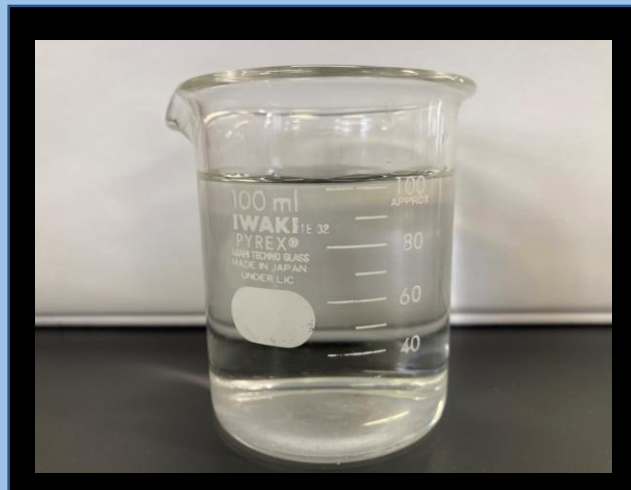
▪ No significant differences were found with filtration experiments.



▪ We tried to find out which materials used in these experiments was causing some problems.

Method

- ① Make the same filtration system that was used before.
- ② Filter the water of the Ishite River using that system.
- ③ Perform the pack test. (twice)



Pour in!

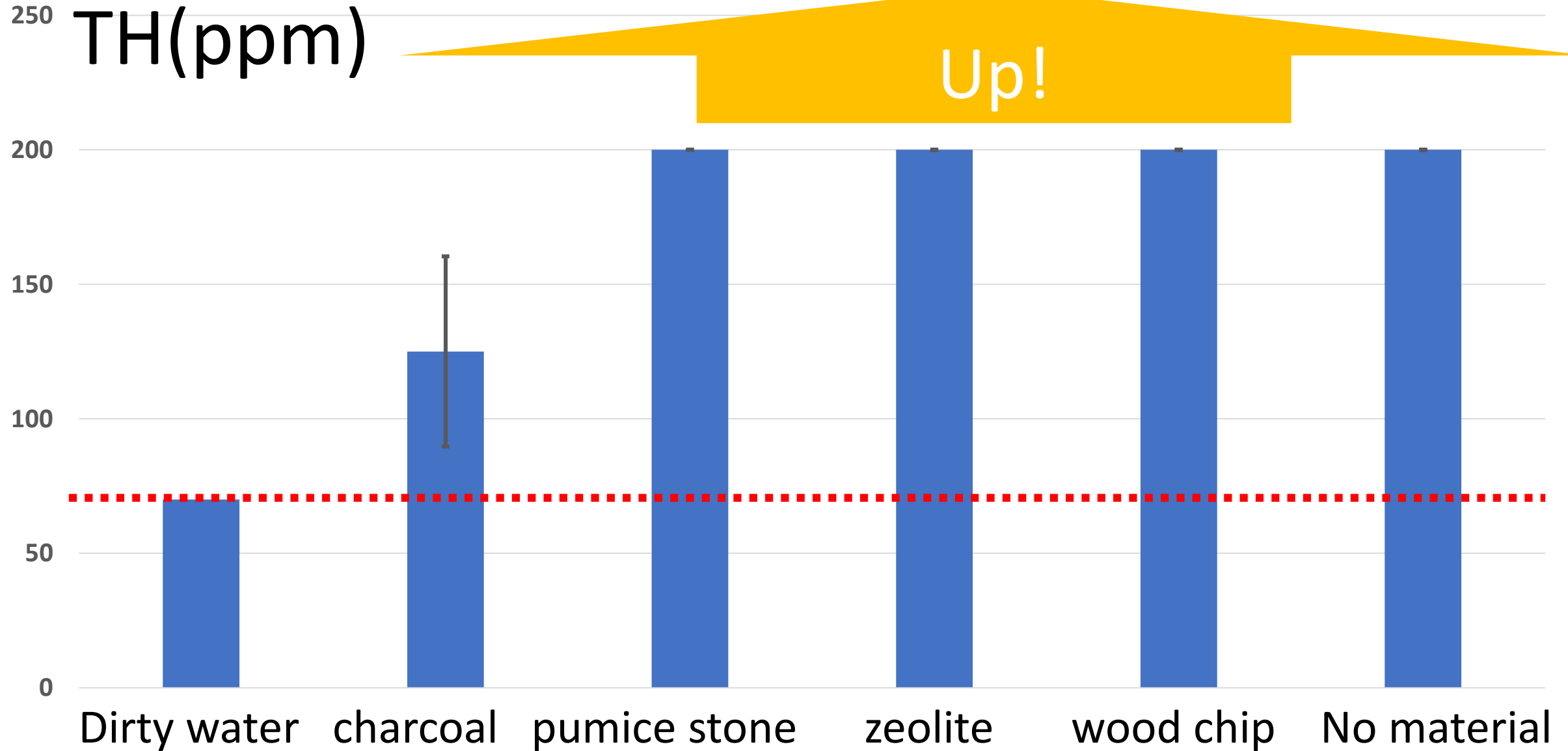


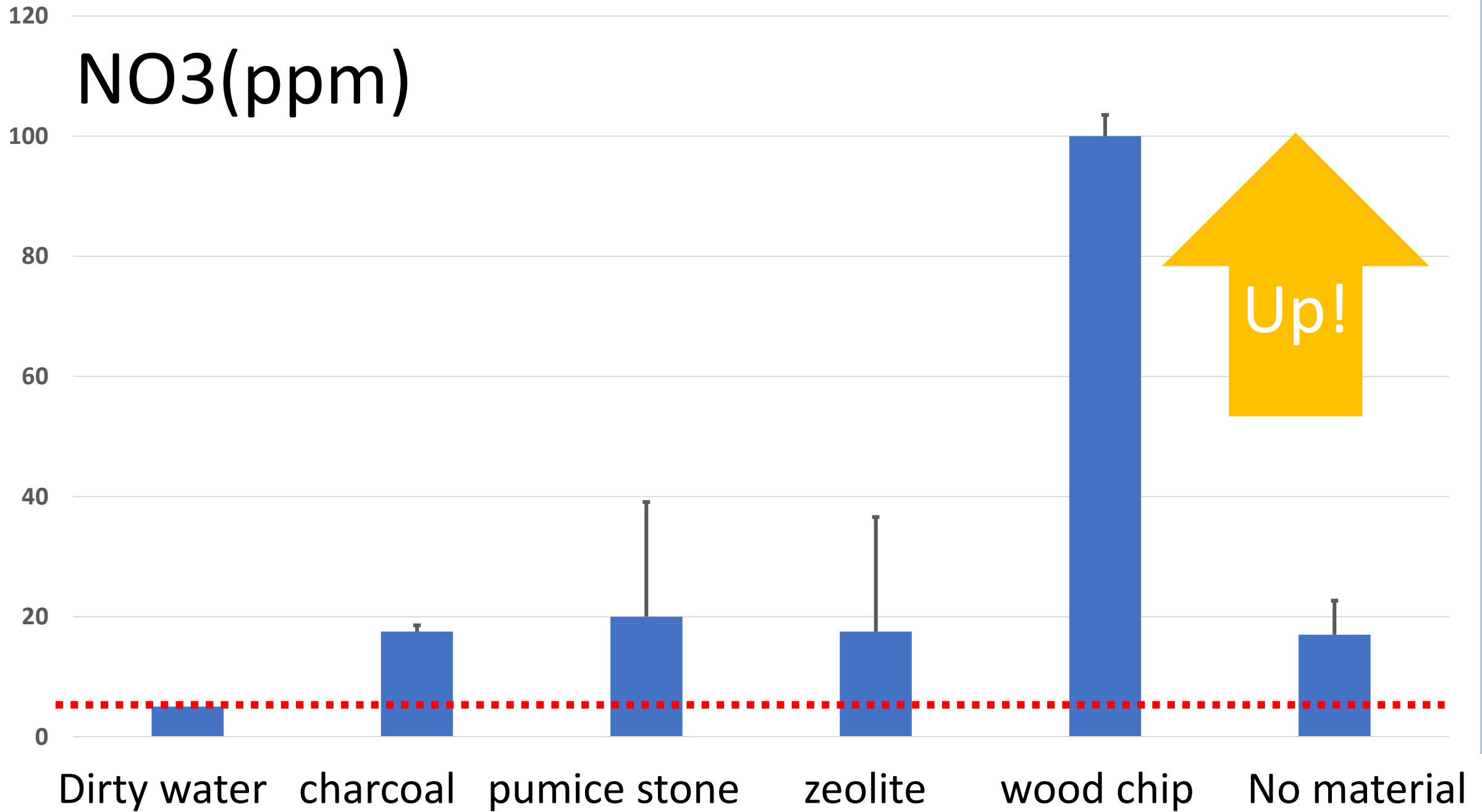
Measure



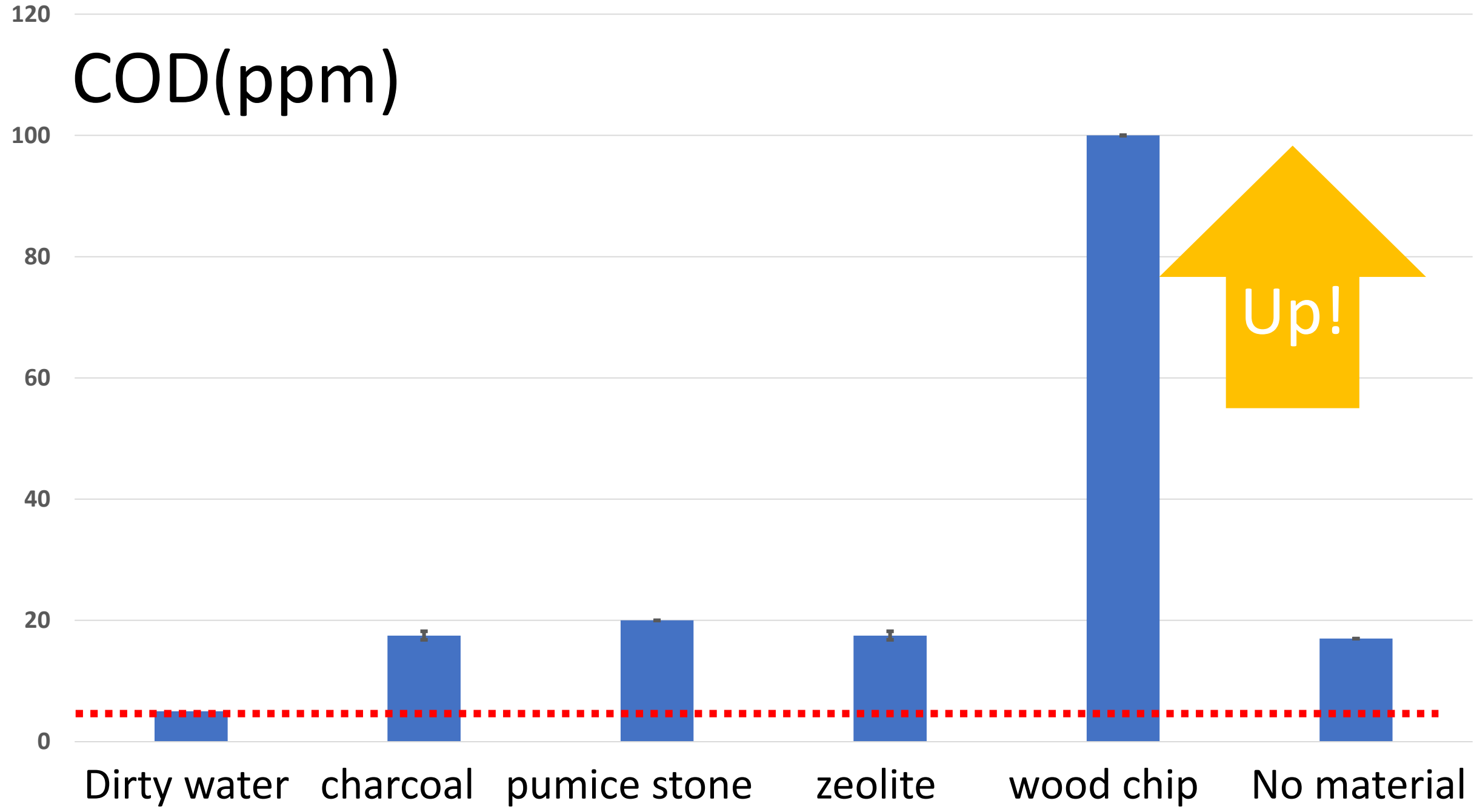
Result

TH(ppm)

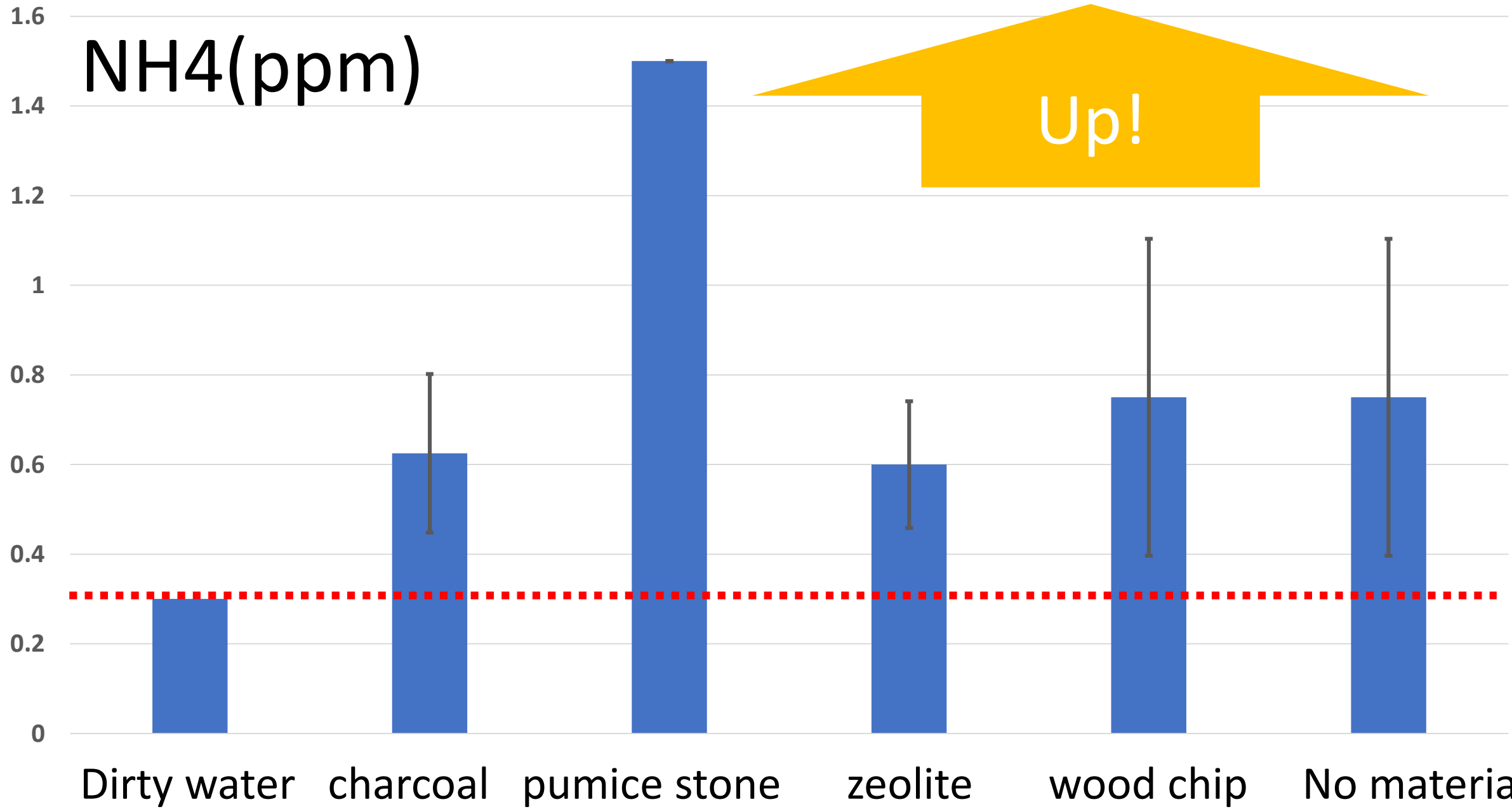


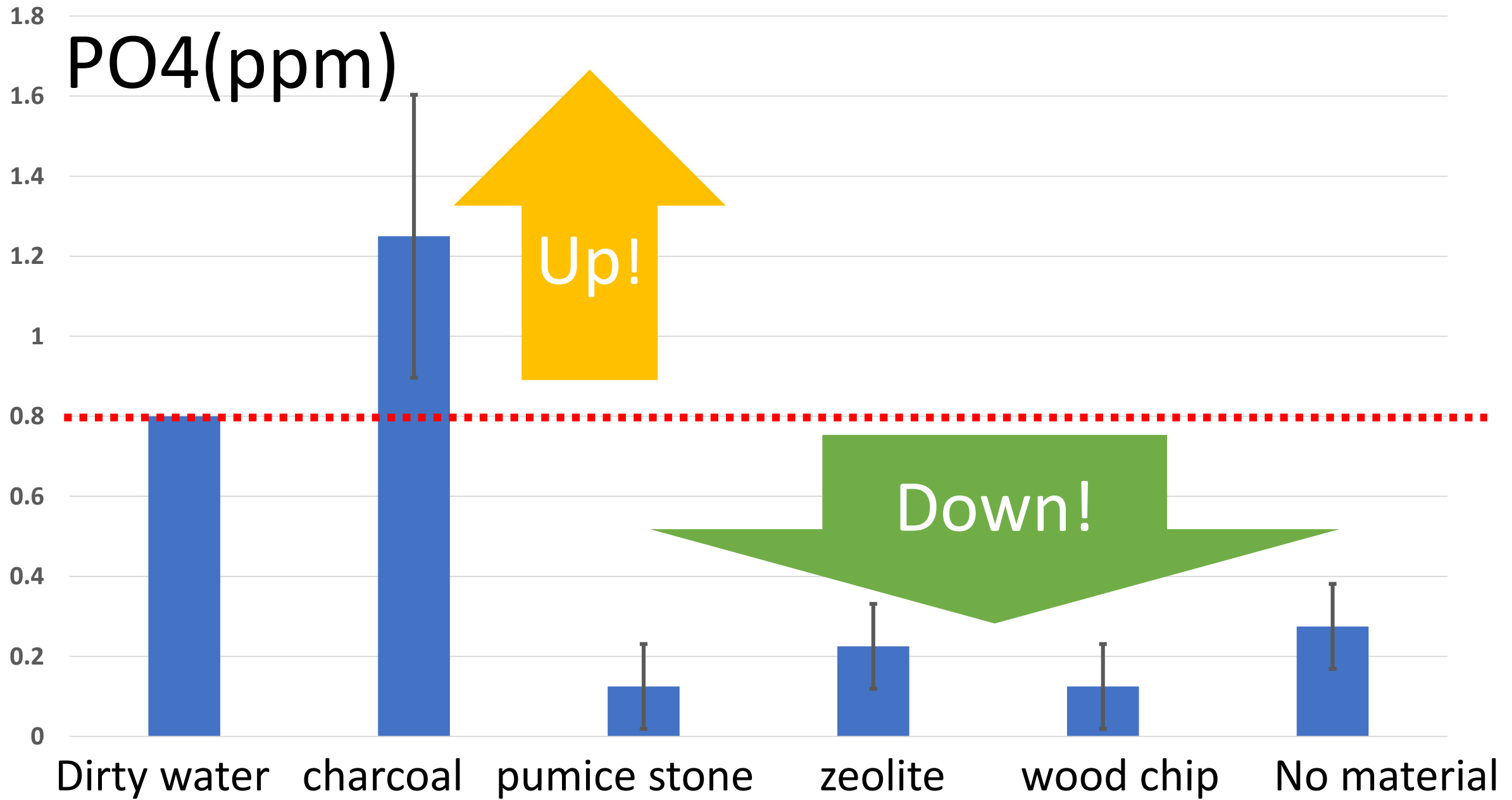


COD(ppm)



NH4(ppm)





Consideration

- Based on the NO_3 & COD results, we concluded that wood chips were not suitable for filtration.
- Based on the NH_4 results, we concluded that pumice stones were a good choice for filtration.
- We considered activated charcoal to be unsuitable as a filtration material from various perspectives.

Plan

There is a problem that the number of experiments is insufficient.

①

Continue the experiment.

②

Consider the results of ① and try another experiment.

③

Take a variety of data.

④

Try the water from the Kapakahi River.

Thank you for listening!!